

Luke 10:38-42

Unscramble each of the clue words. Copy the letters in the numbered cells to other cells with the same number.

LIVGALE

Grid with 6 empty cells and numbers 5, 36, 74, 75, 21 below.

HATMAR

Grid with 6 empty cells and numbers 14, 58 below.

RAYM

Grid with 4 empty cells and number 24 below.

EHMO

Grid with 4 empty cells and numbers 53, 13, 65 below.

ECEMLWO

Grid with 7 empty cells and numbers 72, 66, 50, 23, 17 below.

JEUSS

Grid with 5 empty cells and numbers 1, 40, 41 below.

AST

Grid with 3 empty cells and numbers 10, 52 below.

TEFE

Grid with 4 empty cells and numbers 12, 11 below.

SEINLTED

Grid with 8 empty cells and numbers 51, 4, 44, 57, 56, 20, 22 below.

ADCITDERTS

Grid with 10 empty cells and numbers 48, 8, 55, 67, 35, 29, 6, 31 below.

MYNA TAKSS

Two grids: one with 4 cells (numbers 46, 30, 68) and one with 5 cells (numbers 15, 49, 46, 60).

BY MEYSLF

Two grids: one with 2 cells and one with 6 cells (numbers 73, 63, 7).

LKEU

Grid with 4 empty cells and numbers 62, 69, 18 below.

WORDIER

Grid with 7 empty cells and numbers 61, 25, 3, 19, 43, 28 below.

NAMY SINTHG

Two grids: one with 4 cells (numbers 70, 59) and one with 6 cells (numbers 2, 16, 33, 42, 26, 34).

NEHOCS TEH REEBTT PATR

Four grids: one with 6 cells (numbers 37, 27, 71, 39, 47), one with 2 cells (numbers 32, 54), one with 5 cells (numbers 64, 38), and one with 3 cells (number 9).

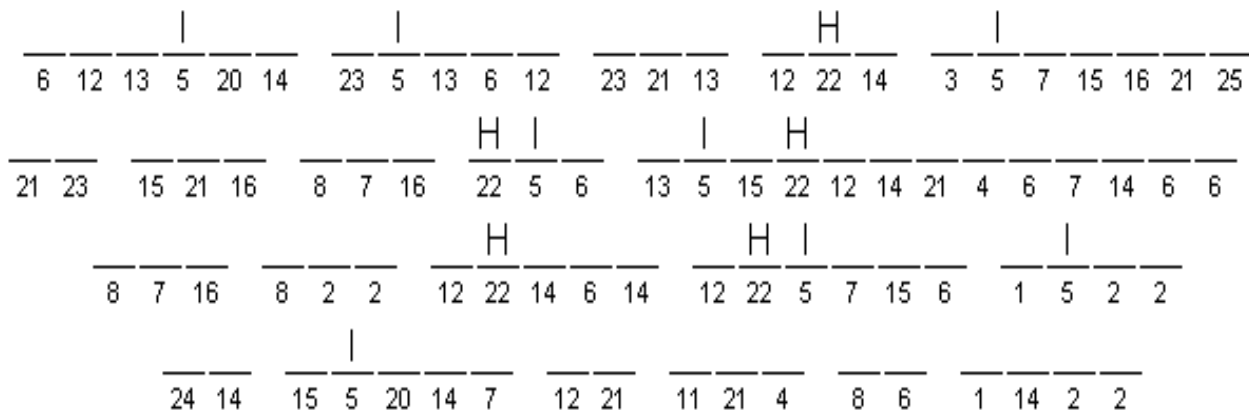
Large grid of numbered empty cells for copying letters from the clue words.

Priorities

Each number in the phrase below stands for a letter of the alphabet. For example, H=22 in the puzzle below. Every time there is an “H” a 22 appears in the puzzle and every time you see a number “22” you can put in the letter “H”.

To decipher the code, try and fill in 2-3 letter words first, and use those numbers to partially fill in other words. If you need help, two additional hints appear at the bottom of the page.

A	B	C	D	E	F	G	H	I	J	K	L	M	N	O	P	Q	R	S	T	U	V	W	X	Y	Z	
							22	5																		



Additional
Hints:
R=13;
G=15